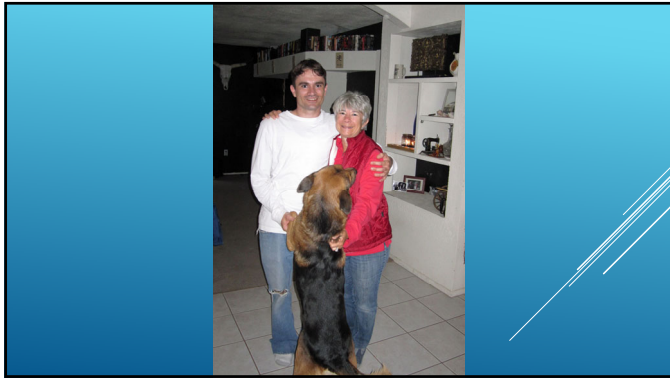


Ask Me How I Know:
Marijuana Use Increases
Risk for Suicide
 Andy's Mom - Sally Schindel

1

Helping Andy
Help Others

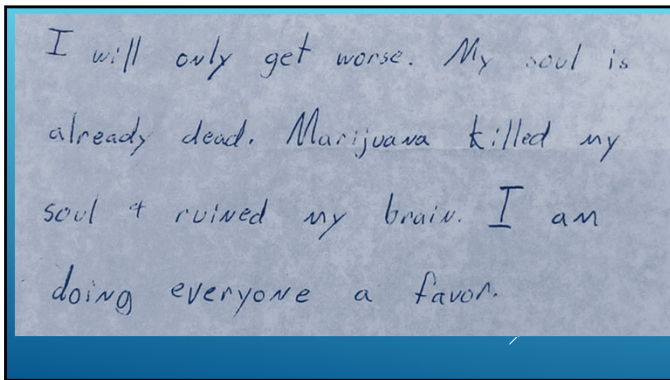
2



3



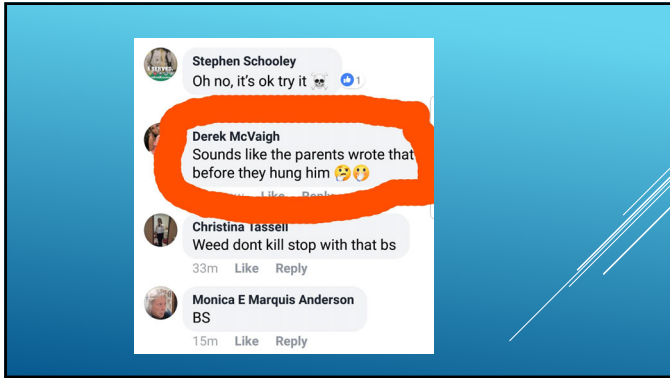
4



5



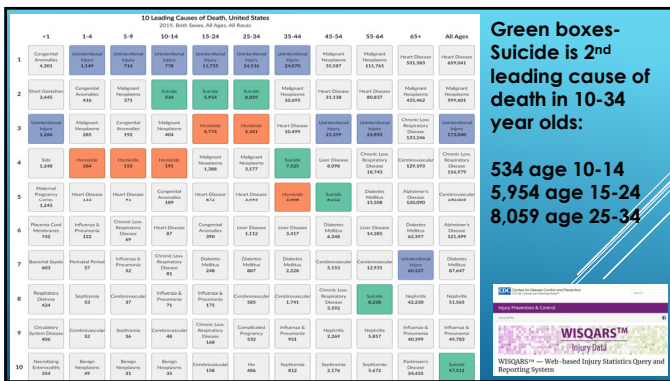
6



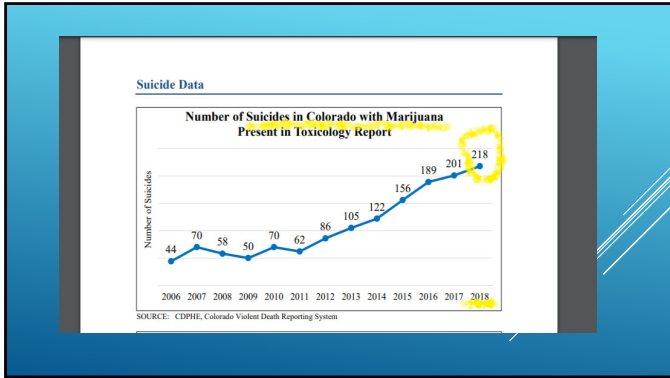
7



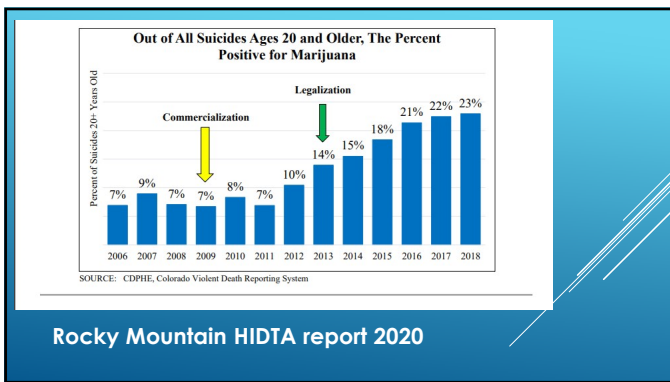
8



9

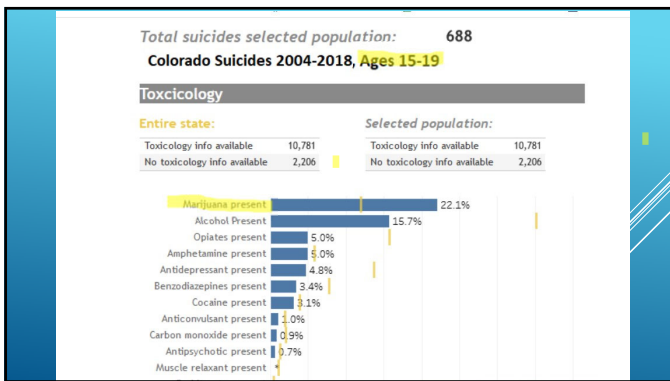


10



Rocky Mountain HIDTA report 2020

11



12

Does marijuana use increase risk of suicide?

<https://johnnysambassadors.org/suicide/>

Applying the Bradford Hill Criteria for Causation to the Relationship Between Marijuana Use and Suicidal Behavior – Christine L. Miller, Ph.D. Sept. 2020

13

References

Agrawal A, Nelson EC, Bucholz KK, Tillman R, Gruza RA, Statham DJ, Madden PA, Martin NG, Heath AC, Lynskey MT. Major depressive disorder, suicidal thoughts and behaviours, and cannabis involvement in discordant twins: a retrospective cohort study. *Lancet Psychiatry*. 2017;4(9):706-714. <https://www.ncbi.nlm.nih.gov/pmc/articles/PMC5696002/pdf/nihms896582.pdf>

Arendt M, Munk-Jørgensen P, Sher L, Jensen SO. Mortality following treatment for cannabis use disorders: predictors and causes. *J Subst Abuse Treat*. 2013; 44(4):400-406. [https://www.journalofsubstanceabuse-treatment.com/article/S0740-5472\(12\)00382-0/fulltext](https://www.journalofsubstanceabuse-treatment.com/article/S0740-5472(12)00382-0/fulltext)

Bloomfield MA, Ashok AH, Volkow ND, Howes OD. The effects of Δ9-tetrahydrocannabinol on the dopamine system. *Nature*. 2016; 539(7629):369-77. <https://www.ncbi.nlm.nih.gov/pmc/articles/PMC5123717/pdf/emss-70462.pdf>

Blum K, Thomas PK, Oscar-Berman M, Felbo M, Baron D, Badgalyan RD, Gardner E, Demetkovic Z, Fahike C, Haberstick BC, Dushaj K, Gold MS. Dopamine in the Brain: Hypothesizing Surfeit or Deficit Links to Reward and Addiction. *J Reward Defic Syndr*. 2015;1(3):95-104. <https://www.ncbi.nlm.nih.gov/pmc/articles/PMC4936401/pdf/nihms-748853.pdf>

Bohmerl KM, Ilgen MA, McCarthy JF, Ignacio RV, Blow FC, Katz IR. Addiction, Tobacco use disorder and the risk of suicide mortality. 2014;109(1):155-62. <https://deepblue.lib.umich.edu/bitstream/handle/2027.42/102156/ada12381.pdf?sequence=1&Allowed=y>

Borges G, Bagge CL, Orozco R. A literature review and meta-analyses of cannabis use and suicidality. *J Affect Disord*. 2016;185:637-4. <https://www.sciencedirect.com/science/article/abs/pii/S0165032715310004?via=ihub>

1 of 6 pages of Dr. Miller's references at JohnnysAmbassadors.org

14

Does marijuana use increase risk of suicide?

- **Correlation** – association

<https://johnnysambassadors.org/suicide/>

15

Does marijuana use increase risk of suicide?

- **Correlation** – association
- **Consistency** across research sites and methods

<https://johnnysambassadors.org/suicide/>

16

Does marijuana use increase risk of suicide?

- **Correlation** – association
- **Consistency** across research sites and methods
- **Sequence** – cause prior to outcome

<https://johnnysambassadors.org/suicide/>

17

Does marijuana use increase risk of suicide?

- **Correlation** – association
- **Consistency** across research sites and methods
- **Sequence** – cause prior to outcome
- **Biologic gradient** - more of the agent causes more harm

<https://johnnysambassadors.org/suicide/>

18

Does marijuana use increase risk of suicide?

- **Correlation** – association
- **Consistency** across research sites and methods
- **Sequence** – cause prior to outcome
- **Biologic gradient** - more of the agent causes more harm
- **Biologic rationale** - does it makes sense?

<https://johnnysambassadors.org/suicide/>

19

Does marijuana use increase risk of suicide?

- **Correlation** – association
- **Consistency** across research sites and methods
- **Sequence** – cause prior to outcome
- **Biologic gradient** - more of the agent causes more harm
- **Biologic rationale** - does it makes sense?
- **Coherent** - In agreement with what is already known

<https://johnnysambassadors.org/suicide/>

20

Does marijuana use increase risk of suicide?

- **Correlation** – association
- **Consistency** across research sites and methods
- **Sequence** – cause prior to outcome
- **Biologic gradient** - more of the agent causes more harm
- **Biologic rationale** - does it makes sense?
- **Coherent** - In agreement with what is already known

- Evidence

<https://johnnysambassadors.org/suicide/>

21

Does marijuana use increase risk of suicide?

- 7 of 9 Bradford criteria are relevant
- 6 of the 7 are satisfied
- The 7th - Sequence – is strongly suggestive

- <https://johnnysambassadors.org/suicide/>

22

Does marijuana use increase risk of suicide?
My answer is YES

<https://johnnysambassadors.org/suicide/>

Applying the **Bradford Hill Criteria for Causation** to the Relationship Between Marijuana Use and Suicidal Behavior – Christine L. Miller, Ph.D. Sept. 2020

23

Is there still suicide risk after marijuana use cessation?

Risk factors remain:

- Mental and physical health
- Environmental – stress, means, unemployment
- Historical – trauma, family history, **PREVIOUS ATTEMPTS**

24

WHAT ARE SOME SIGNS OF SUICIDE RISK?

Indications of suicide ideation:

- TALK** – of hopelessness, burden to others, feeling trapped
- BEHAVIOR** – isolating, fatigue, aggression, giving things away, saying goodbyes
- MOOD** – anger, shame, anxiety, a sudden improvement expressing relief

25

WHAT CAN FAMILIES DO IF THEY OBSERVE SUICIDE IDEATION?

- Never under react. Consider it serious.
- Don't judge.
- Talk, ask questions, learn, have patience.
- Build connection.
- Increase "I Love You"s.

26



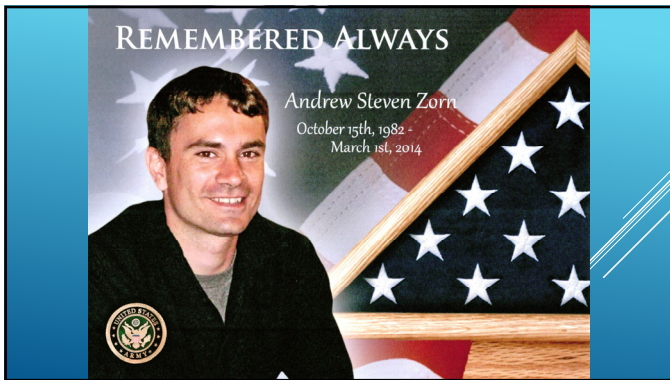
WRITE DOWN THIS NUMBER
800-273-TALK (8255)
 1-800-273-TALK (8255)
 suicidepreventionlifeline.org

27

ARE THERE KNOWN SUICIDE DEATHS FROM MARIJUANA USE?

Johnny - CO	Zach - MI	David - TX
Andy Z - AZ	Alyssa - FL	Jolo - CA
Andy B - AZ	Sean - AZ	Thomas - CO
Brant - CO	Joey - IL	Daniel - CO
Shane - CA	David - MI	Matthew - CA
Tyler - IL	Brian - IL	Chris - AZ
Kevin - CA	Matthew - FL	Marc - CO
Charles - VA	Garrett - WI	Luke - CO
Dillon - CO	Alex - AZ

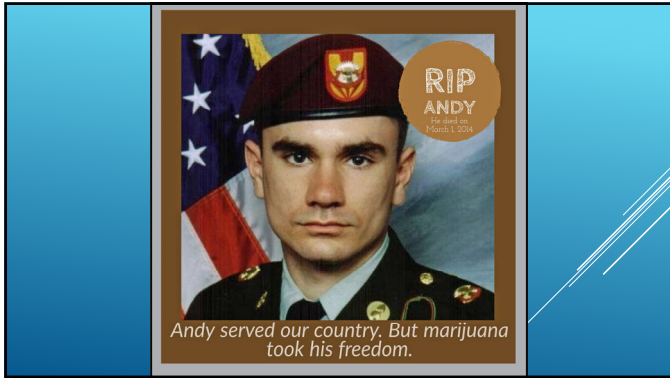
28



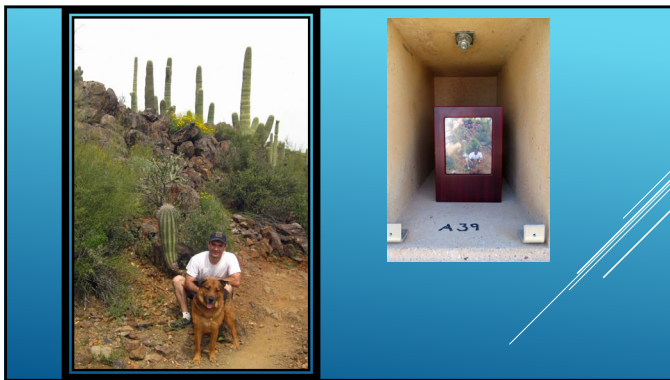
29



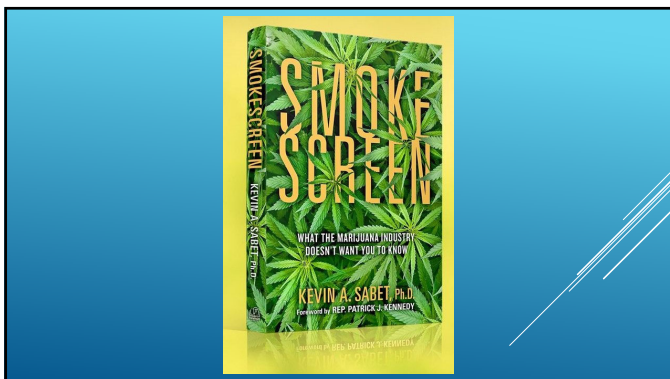
30



31



32



33

A Mom's Job - A Son's Story

**Helping Andy
Help Others**

Andy's Mom - Sally Schindel

34